

HRHN Annual Report Released

*A Year in Review for
FY 2020-2021 for the
Network including
Program Results.*

*New Network Member
Spotlight: Empath Health*

COVID-19 Update

*Updated COVID-19
Booster Guidance Now
Available*

*Job Opportunities
Available.*

Quarterly Newsletter for January - March 2022



Network News

The Latest on Network Initiatives, Member Updates, and Rural Health.

**Central Florida Health
Care shares insights on:
Raising Awareness on
Birth Defects and
Children's Dental
Treatment**

**AdventHealth:
Heart at Work Article
for American Heart
Month**

**FRHA announces 2022
Annual Educational Summit
for April 5th - 6th, 2022**


**Telemedicine Talk 8:
HRHN's HD CHW
Program is a free
resource for Telehealth
assistance**

**Did You Know?
HRHN's HD CHW
Program is now OPEN**

**HRHN New Staff
Announced!**

**Announcements from
our partners at:
AdventHealth, CFHC,
Senior Connection
Center, DeSoto
Memorial Hospital,
Moffitt Cancer Center,
COVID Collaborative,
Rural Health Research
Gateway and the Health
Insurance Marketplace**

**NRHA Updates from
Latest Newsletter**




Phone: 863-471-6007

Email: support@hrhn.org

Web: www.hrhn.org

Follow us on social media:

 facebook.com/HeartlandRHN

 [@hrhn_imad](https://www.instagram.com/hrhn_imad)

 [@hrhnstaff](https://twitter.com/hrhnstaff)



Publishes FY 2020-2021 Annual Report

Every year, HRHN puts together an Annual Report to share program highlights, financial highlights, and Network updates. You can see the Annual Report by clicking [here](#).



New Year, New Hope for Rural America in the Fight Against COVID

By: Alan Morgan and John M. Bridgeland

A New Year rings in and the COVID pandemic is still with us. Pandemic fatigue is understandable at this point. But the loss of more than 824,000 Americans to date and the arrival of a new, more transmissible variant, should drive a renewed push to turn the tide.

We have the tools to do it. We know where our focus must be, but one area of great concern is rural America.

Rural communities are among the hardest hit as another wave of the pandemic rolls across America and Omicron renews COVID's assault on the unvaccinated. Last fall, the incidence rates of COVID-19 in rural America were roughly 54 percent higher than elsewhere in the country, according to the Rural Policy Research Institute. To date, if you live in a rural community, you are more than twice as likely to die from COVID than those in nonrural areas.

Analysis from The Daily Yonder showed that incident rates climbed nearly 50 percent in rural counties in the two weeks following the Thanksgiving holiday, a worrisome trend with the rapid spread of the Omicron variant now.

The disparity requires an effort to reach families in these communities with trusted voices, sound science, and accurate information. Trusted rural voices have banded together with the National Rural Health Association (NRHA) and COVID Collaborative to address the disparity and look for opportunities to speak directly with rural Americans about the vaccines.

To continue reading this article, [click here](#).

HRHN is launching a new Vaccine Initiative with our CHWs. If you want more info, email us at HDCHWProgram@hrhn.org.



Give Your COVID-19 Vaccination Protection a Boost

Booster shots are now available for everyone 12+ and vaccinated

COVID-19 vaccines continue to work very well at preventing severe illness, hospitalization, and death. A booster shot is an extra dose that helps keep up your protection.

When to get your booster

Stay safer this winter. Get a booster as soon as you're eligible.

- **Pfizer-BioNTech**
(5 months after your 2nd dose)
- **Moderna**
(5 months after your 2nd dose)
- **Johnson & Johnson's Janssen**
(2 months after your single dose)

Find free vaccines near you

- Visit [vaccines.gov](https://www.vaccines.gov)
- Text your ZIP code to 438829
- Call 1-800-232-0233
- Scan the QR code



did you know?

If you are a resident of Hardee or DeSoto County, you can join our *Free* HD CHW Program just by calling us.

The HD CHW Program provides our clients a Community Health Worker to assist them with the following:

- establishing a regular doctor;
- understanding and improving new or uncontrolled health diagnoses (i.e. Diabetes, Obesity, Heart Disease, etc.);
- getting any clinical and non-clinical help needed, with as few issues as possible;
- working to eliminate issues with getting care; and/or
- assisting with applying for or using health insurance.

We can help get you referred to a collaborator for each of the following areas:

- Family Medicine
- Preventative Medicine
- Heart and Vascular Care
 - Lab Services
 - Physical Exam
- OBGYN and Pre-natal Care
 - Pharmacy
 - Dental Care
- COVID-19 Testing & Vaccines
- Tobacco Cessation Classes
 - Mental Health Support
 - and much more!



CFHC Opens New

The 2021 Business of the Year in Hardee County has a new home! Central Florida Health Care is thrilled to announce the opening of its state-of-the-art facility located at 807 Cobb Street, near downtown. It's the first CFHC Community Health Center to have a drive-thru pharmacy making life a little easier for patients on the go. Services include medical, dental, ob-gyn, pediatrics, and pharmaceutical.

It's an exciting time for the CFHC organization as the opening also coincides with Central Florida Health Care's 50th anniversary. Nearly 50 employees transferred from the KD Revell Road location to the new facility.

Central Florida Health Care is a 501(c)(3) nonprofit organization serving Polk, Highlands, and Hardee counties. The goal is simple - to provide high-quality, affordable, and accessible health care services to all, regardless of ability to pay. There are 14 sites including one Community School Health Center located at Crystal Lake Elementary School in Lakeland. CFHC also has two mobile healthcare units to serve the most rural areas of the tri-county area. A 15th location is scheduled to open in Davenport later this spring.

Patient ages range from newborns to the elderly, and the patient population reflects the communities we serve, with income levels varying widely. All CFHC patients can be offered discount services through a simple income verification process based on national guidelines. Payment options include private insurance, self-pay, or sliding scale payments. The most important consideration is that CFHC turns no one away.

CFHC's Community Health Centers offer quality patient-centered care for every stage of life. Onsite labs and full pharmacy services provide convenience for patients and busy families. Translation services are available for all languages, and specially trained Navigators (Community Health Workers) assist patients at no charge with everything from forms to transportation. These services ensure that access to health care is not a barrier to treatment.

At the core of all we do is provide every person an opportunity to experience "healthcare with a heart."

A ribbon cutting is planned for March to commemorate the opening.

Wauchula Clinic



2022 marks our 50th Anniversary serving families across Central Florida. We look forward to seeing you at our newest health center.

Medical



Behavioral Health



Dental



Pediatrics



Pharmacy



OB/GYN



Now Open

**807 Cobb Court,
Wauchula, FL 33873**



**Central Florida
Health Care**
Health Care With a Heart

866.234.8534 | cfhc.org |



FRHA's 2022 HEALTH LITERACY ECHO

The Rural Health Partnership has partnered with the Florida Rural Health Association and Suwannee River AHEC to offer a multi-session webinar series that prepares providers and community educators for evaluating the health literacy needs of different audiences, choosing instructional strategies, and evaluating success. The best part of our program is that your participation is **TOTALLY FREE**.

Each TeleECHO webinar will be 50-60 minutes long and sessions start at noon (12:00 pm EST). Following a short lecture, each session will include an interactive case study, problem-from-the-field, Q&A session, and opportunity to communicate with health literacy experts. Sessions use the Zoom application for videoconferencing.

Using Plain Language Principles to Communicate Health Messages on Tik Tok



Featuring Guest Speaker

Dr. Guyer, PhD, MEd, RDN
University of Florida,
College of Medicine and
Public Health & Public
Health Professions

February 16, 2022
12pm - 1pm

Presented by the Florida Rural Health Association

The 26th Annual Rural Health Educational Summit

REGISTRATION OPEN!



April 5th-6th, 2022

**Hilton University of Florida Conference Center
Gainesville, FL
Hosted by Florida Rural Health Association**

Registration is open for the 26th Annual Rural Health Educational Summit. We invite you to join FRHA in Gainesville, FL for the opportunity to keep alive rural health voices in Florida.

Registration Fees

Member: \$240.00

Non-Member: \$315.00

Student: \$125.00

Wednesday (Day Only): \$150.00

Hotel Booking Information coming soon

[Register Here](#)

Meeting Safety Plan

We are planning for a safe event to protect all our attendees. This includes:

Masks are highly recommended unless actively eating or drinking

Meals will be prepared and served with your safety in mind

Hand Sanitizer will be available at each table as well as stations provided throughout the facility

Call for Presentations

Interested in speaking at the FRHA Summit? [Click here](#) to learn more and submit your proposal. The deadline to submit a proposal is Feb 28th, 2022.

Call for Exhibitors

The FRHA Board of Directors and members invite you to showcase your company/organization during the FRHA Summit. [Click here](#) for exhibitor invitation and application for more information. Space is limited, so please be sure to submit your application early.

FRHA Award Nominations

Do you know an outstanding rural health leader? Or a compassionate public servant improving the quality of life in rural Florida? Nominate him or her for the Wendell Rollason Award, both presented during the FRHA 26th Annual Summit. Non-members will be asked to make a free account as a new user. Learn more and submit your nomination [here](#).

are you awesome?

WE'RE HIRING!



CHW Jobs Available!

Heartland Rural Health Network, Inc. is currently hiring for the following full-time positions for the counties indicated:

CHW Outreach Coordinator (Polk, Highlands, Hardee)
Community Health Worker for HD CHW Program (Hardee, Desoto)
Vaccination Community Health Worker (Polk, Highlands, Hardee)

For more information, including full Job Descriptions and how to apply, visit www.hrhnl.org/employment.



We're hiring!

The iMAD Program is hiring multiple positions under their new PREP Grant covering Highlands and Hardee Counties. If you have a passion for helping youth, please consider applying for the following positions:

Full-Time Health Educator (1)

Part-Time Health Educator (2)

Full-Time Data Manager/Administrative Assistant (1)

To Apply:

Review the Job Description on www.hrhnl.org/employment and then send your RESUME and COVER LETTER via email to iMAD@hrhn.org. Please put the position you are applying for in the subject line.



Telemedicine Talk

Episode 8: HD CHW Program assists with setting up and utilizing Telehealth Tech.

Are you struggling with setting up your technology to be able to utilize telehealth options from your provider? Are you a provider that provides telehealth options but have many patients that are uncomfortable using it?

HRHN's HD CHW Program provides Community Health Workers to patients enrolled in our free program that can assist patients with setting up and using telehealth options from our provider partners and for remote specialists. As long as the patient lives in Hardee or DeSoto Counties, either the patient can contact us directly to enroll in our program and request assistance with telehealth or the provider can contact our HD CHW Program Coordinator to discuss best ways to address their patients' telehealth needs and how HRHN can help.

We have many providers in our area that provide telehealth options but not many patients that engage those options. Let us help make the process easier, making seeking care easier for all. Just call our program today 863.494.8409. You can learn more about the HD CHW Program by visiting our Facebook page.

*Congratulations
to DMH on earning
Four Stars!*



DESOTO MEMORIAL HOSPITAL

900 N. Robert Ave. • Arcadia, FL 34266
863-494-3535 • www.dmh.org

DESOTO MEMORIAL HOSPITAL

Earned an overall hospital rating of

FOUR STARS!

*These results are published by the
Center for Medicare and Medicaid Services*



We've also maintained our 4 star rating in patient satisfaction!

Want to join the DMH 4-star team?

DMH is currently hiring for the following positions:

Clinical Openings

- CRNA - Full Time (no OB or Peds)
- RN or LPN Med/Surg - Full Time Days & Nights
- RN ICU - FT Night (2 years experience required)
- RN Home Health - FT, PT, PRN (must have home health experience)
- LP Home Health - FT, PT, PRN (must have home health experience)
- LP Corrections - FT Varied shifts
- APRN Corrections - PRN/Pool (corrections experience a plus)
- CNA Med/Surg - PRN Days & Nights
- OR Surgical Tech - FT Days (share call rotation)
- Respiratory Therapy - RT/CRT/CRRT, Pool All Shifts (must have 1 year experience in an acute care setting)
- Respiratory Therapy - RT/CRT/CRRT, FT Days (must have 1 year experience in an acute care setting)
- Physical Medicine - Physical Therapist FT Days
- Physical Medicine - Speech Language Pathologist FT Days
- Physical Medicine - Occupational Therapist FT Days
- CT/XRAY Technologist - PRN/Pool

Potential Staff Members who will be working in direct contact with patients as clinical employees must have the following:

- Valid and Clear Florida License (for your applied field)
- American Heart Association BLS Certification
- American Heart Association ALS Certification is also required for some roles, but may be acquired after hire

Non-Clinical Openings

- Patient Accounts Cashier - FT Mon-Fri

Click [here](#) to find out more about open positions.

Empath Hospice Granted Initial Award to Expand Services to Hardee, Highlands and Polk Counties

Excerpt taken from Press Release from Sky Roberts.

Empath Health announced that its affiliate organization Empath Hospice has been granted initial approval by the Agency for Health Care Administration to deliver hospice care services in Hardee, Highlands, and Polk counties.

Empath Hospice is built on the foundation of Suncoast Hospice and Tidewell Hospice, which have been providing pioneering care in the Tampa Bay and Southwest Florida regions for a combined 85 years.

Empath Health CEO Rafael J. Sciallo said, "We are so honored to have the opportunity to serve the residents of Hardee, Highlands and Polk counties and their families with the expert, compassionate care we've been providing across our region."

Empath Hospice brings several unique services to residents, including an Empath Mobile Access to Care unit for outreach activities in rural and low-income areas and a partnership with Heartland Rural Health Network to help community health workers reach patients with chronic, advanced or terminal illness.

To continue reading this article, [click here.](#)



Tai Chi For Arthritis for Fall Prevention

Reduce pain

Gentle and
flowing
movements



Ease Stress

Exercises
done
seated or
standing

60 years old
and older

Afraid of falling?
Uncertain about your balance?

Tai Chi may be for you!

Free 8 Week Workshop

Mondays & Wednesdays

Mar 7 - Apr 27, 2022

Time: 1:00pm—2:00pm

Hosted by: Senior Connection
Center
via Zoom

Register at

<https://bit.ly/3B6frOv>

After registering, you will receive a confirmation
email containing information about joining the
meeting.

Questions?

Contact Christina Nowell 813-676-5568

SENIOR
CONNECTION CENTER INC.
YOUR AGING & DISABILITY RESOURCE CENTER



**AM and PM
classes
available. Click
the link to enroll.**

Please note you must be 60 or
older and live in Hillsborough,
Polk, Manatee, Highlands or
Hardee Counties to attend.

Senior Connection Center's Virtual Tai Chi Workshops Now Open!

Tai Chi For Arthritis for Fall Prevention

Reduce pain

Gentle and
flowing
movements



Ease Stress

Exercises
done
seated or
standing

60 years old
and older

Afraid of falling?

Uncertain about your balance?

Tai Chi may be for you!

Free 8 Week Workshop

Mondays & Wednesdays

Mar 7 - Apr 27, 2022

Time: 11:00am—12:00pm

Hosted by: Senior Connection
Center
via Zoom

Register at

<https://bit.ly/34mu0Bi>

After registering, you will receive a confirmation
email containing information about joining the
meeting.

Questions?

Contact Christina Nowell 813-676-5568

SENIOR
CONNECTION CENTER INC.
YOUR AGING & DISABILITY RESOURCE CENTER





February is Heart Month

Heart at Work: How to Improve Your Heart Health

Think heart disease is something you don't have to worry about until you reach your golden years? Think again. Plaque can begin to build up in your arteries as early as childhood and continues to progress throughout adulthood. Over time, plaque may partially or completely block blood flow through an artery, which can lead to a heart attack or stroke. The buildup of plaque in the arteries is a condition called atherosclerosis and it often leads to coronary heart disease – the most common type of heart disease. To continue reading, [click here](#).

Surviving a Heart Attack: Why Care During the First Hours is Critical

In the United States, about 790,000 people have a heart attack each year. With numbers like that, it's likely that you, or someone close to you, will have a heart attack during your lifetime. Luckily, many people survive heart attacks and go on to live fulfilling lives. And, the odds for this happy outcome are far higher among folks who recognize they're having a heart attack and get the right care, right away. Protect yourself and your loved ones by understanding what causes this health crisis and how prompt treatment can save a life. To continue reading, [click here](#).

Success for Heart Failure Patients

With heart disease being the leading cause of death in the U.S. and in Florida, cardiac care is a priority at AdventHealth Sebring and a guiding force behind our Heart Success Clinic.

After returning home from the hospital, heart failure patients often have medical issues that need to be addressed immediately. In many cases, the patients return to the emergency department because they have nowhere else to go.

AdventHealth's Heart Success Clinic is a multidisciplinary practice for heart failure patients that is designed to improve care, reduce hospital readmissions, and lower health care costs. Patients can be seen the day after they are released from an acute-care facility, in urgent-care situations requiring triage of heart failure symptoms, and on an as-needed basis.

To continue reading this article and learn more about AdventHealth's Heart and Vascular Center programs, [click here](#).

AdventHealth is now offering a free, hands-only CPR bystander class to residents of Highlands and Hardee counties.

If you or your organization would like to host or schedule a class, but reach out to Alison Grooms.

It teaches compressions only (no breath work or defibrillator training) and does not offer a CPR Certification but does come with a kit that includes a mannequin and instructional DVD.

To discuss, email Alison at alison.grooms@adventhealth.com



Join AdventHealth for a FREE,
Virtual Mental Health First Aid Class
for any Highlands or Hardee County residents.

Friday, February 25th
9:00 am - 5:00 pm

Register by Friday, February 18th.
REGISTRATION REQUIRED.

To register e-mail Alison Grooms (alison.grooms@adventhealth.com)
or Stevie Sweet (stefania.sweet@adventhealth.gov).

Children's Dental Treatment Brings Lifelong Smiles



Do you remember your parents saying, "Brush Your Teeth?" The words are impactful because they mean Everything when keeping children healthy for life! February is National Children's Dental Health Month, and Central Florida Health Care wants families to brush up on oral health tips.

The American Association of Pediatric Dentists says parents need to find their child a "dental home" no later than their first birthday or first tooth. Oral health impacts our overall health, so routine exams and dental habits are crucial for children.

Mouths contain bacteria, and some can cause tooth decay and gum disease, ultimately leading to potential health concerns, including heart disease. Tooth decay is prevalent among children in America, but it's preventable.

Central Florida Health Care has general dentists that primarily see children and they encourage early dental care in several locations. Dr. Archana Antony says it's vital for children to have routine exams. Nutrition, brushing habits, flossing, and fluoride all impact oral health.

Children should brush their teeth twice a day and floss regularly between the teeth. Professional cleanings remove tartar, which traps plaque bacteria along the gum line. A balanced diet with fewer snacks can also lower the risk of getting tooth decay and gum disease.

Children will feel more comfortable seeing the dentist when introduced at an early age, plus they'll adopt healthy habits to last a lifetime. And that's something to smile about!

If you need to schedule your child a dental exam in Polk, Highlands, or Hardee Counties, call us at 866.834.8534.

Raising Awareness on Birth Defects

Pregnancy is a beautiful, life-changing process, but discussing the possibility of birth defects is not always an easy topic.

January is National Birth Defects Awareness Month, highlighting how women can increase their chance of having a healthy baby during pregnancy.

The Centers for Disease Control and Prevention tells us every four and a half minutes, a baby is born with a birth defect in the U.S. The most common include, down syndrome, heart defects, spina bifida, and cleft lip/palate. While not all birth defects are preventable, providers list important steps women should follow.

Taking 400 micrograms of folic acid daily can help prevent major birth defects of the baby's brain and spine, especially when taken before becoming pregnant. Folic acid can come from fortified foods, like bread, eggs, milk, or supplements. It's also very important to maintain a healthy diet and weight.

Other ways to reduce the risk are to manage diabetes and refrain from smoking, drinking, and taking drugs. Infections can also be harmful during pregnancy, which is why it's important to talk with your provider about certain vaccinations to protect a baby's development. Running a high fever during early pregnancy is also a risk factor.

Kelly Crews, a nurse practitioner who specializes in pediatrics with Central Florida Health Care, says all babies should receive a newborn screening, including a critical heart disease screening, and the pediatric provider should follow any abnormal result.

On a positive note, many children born with birth defects can still live long and happy lives. Learning about a condition early and knowing everything about it will better prepare parents to provide the best needs long term.

5.8 Million Additional Americans Gained Insurance Coverage this Year

In January, the Biden-Harris Administration announced a record-breaking 14.5 million people have signed up for 2022 health care coverage through the Marketplaces during the historic Marketplace Open Enrollment Period (OEP) from November 1, 2021 through January 15, 2022 - including 5.8 million people who have newly gained coverage under the Administration. The American Rescue Plan lowered health care costs for most Marketplace consumers and increased enrollment to these record levels: Healthcare.gov consumers saw their average monthly premium fall by 23%, compared to 2021 enrollment period that ended before the American Rescue Plan passed. The enrollment numbers are a testament to the Biden-Harris Administration's commitment to lowering costs for working families and reaching people where they are through concerted outreach.

This week, HHS's office of the Assistant Secretary for Planning and Evaluation (ASPE) is also releasing a report analyzing new survey data that showed the uninsured rate fell in 2021 after the American Rescue Plan and outreach efforts took effect. According to the report, the uninsured rate for U.S. population was 8.9% for the third quarter of 2021 (July - September 2021), down from 10.3% for the last quarter of 2020 - corresponding to roughly 4.6 million more people with coverage over that time period. Coverage gains occurred among both children and working age adults, with the largest coverage gains for those with incomes under 200% of the poverty level.

To read this press release in its entirety, [click here](#).

To look more into healthcare.gov, [click here](#).

To view the Marketplace 2022 OEP National Snapshot, [click here](#).

To view the ASPE report, [click here](#).

Rural-Urban Differences in Adverse and Positive Childhood Experiences:

Results from the National Survey of Children's Health

Adverse childhood experiences (ACEs) are events of abuse, neglect, and household dysfunction occurring between birth and 17 years of age. Studies have found a direct correlation between ACEs and risky behaviors, poor physical health, and poor mental health outcomes in childhood. Positive childhood experiences (PCEs) include a nurturing, safe, and supportive environment allowing for health development and overall wellness. In prior research, rural-urban differences in PCEs have not been examined using all 50 states. This brief examines the types and counts of ACEs and PCEs for rural and urban children. The study also reports on the differences between rural and urban ACEs and PCEs across all 50 states and the District of Columbia.

To view these results, [click here](#).

Contact Information:

Elizabeth Crouch, PhD

Rural and Minority Health Research Center

Phone 803.576.6055

crouchel@mailbox.sc.edu

National Rural

In the latest NRHA

- We can tell Congress what, but only you can tell them why...
- NRHA wants to know: Who are your rural health heroes?
- How pandemic funding masked rural hospital financial strain.
- Vaccine mandate for
- In Rural South, Poor Health Tied to Legacy of Slavery, Racism
- Health Care Workers' COVID vaccine deadline is January 4th
- Why the US Nursing Crisis is Getting Worse
- Rural Hospitalists Confront COVID-19
- NRHA Member on Reducing SUD Stigma, Workforce Shortages
- How Telehealth Interoperability Improves Care

To view the Newsletter in its

Health Updates

A today Newsletter:


- **Join Our Campaign: The New Look of NRHA Advocacy**
- **1 in 5 Americans Sought Mental Health Help During Pandemic**
- **Could Moving Patients to Rural Hospitals Free Up Urban Beds?**
- **Urban Med School Leader Shifts Focus to COVID, Rural Health**
- **New Trial Tackles Childhood Hearing Loss in Rural Areas**
- **Rural Health Network Development Funding Available**
- **Pandemic Adds Stress to Already Stained Rural Fire Departments**
- **NRHA Webinars on Cost Report Accuracy, Swing Beds**
- **Share Your Views on Rural Health Priorities, Veteran Staffing**
- **Tackling Rural Health Technology Concerns in CAHs**

s entirety, please click here.

New Network Member Spotlight



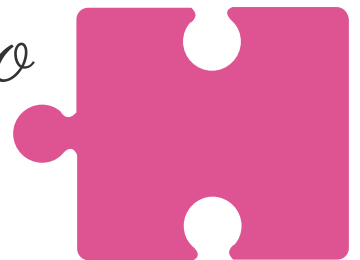
Empath Health is a not-for-profit integrated network of care that provides full life care and support for those diagnosed with chronic, advanced, or terminal illnesses, grieving, or helping with medical decision making. Hospice care laid the foundation for Empath Health. More than 44 years ago Suncoast Hospice in Pinellas County, and 41 years ago Tidewell Hospice in Sarasota County, saw neighbors coming together to serve those who were dying – to ensure they weren't alone, had access to expert and compassionate medical care, and support for their families before and after a loved ones' death. In 2021 Suncoast Hospice of Hillsborough joined our family of companies. And now we are excited to bring these pioneering services to the residents of Polk, Highlands and Hardee counties as Empath Hospice.



As Empath Hospice we will bring almost 90 years of combined service experience with interdisciplinary teams including physicians, nurses, nursing assistants, spiritual care coordinators, social workers and counselors and trained volunteers. And this care will be provided mostly where people truly want to be at this time in their lives--in their homes--wherever that may be--private residence, long term care facility or nursing homes.

Working with other local nonprofits, including through the Heartland Health Network is important. As we look forward to joining the efforts of other organizations of addressing various health disparities in this region including increasing access to quality, compassionate end-of-life care. We are an organization who greatly values the diversity found in the varied communities we serve, and we look forward to listening to how we can a part of addressing the concerns and questions of the residents of Polk, Highlands and Hardee counties soon.

*We are excited to get to
know you better.*





HRHN's Employee Shout Outs!



Michelle Cathey, iMAD Program

Michelle has been with HRHN under the iMAD Program since 2017. With the growth of the iMAD Program under the new C-PREP Funding and in recognition of the work Michelle has done for the program, she has been promoted to the iMAD Assistant Program Director.



Valeria Carrasquillo Rivera, HD CHW Program

Valeria started with HRHN under the HD CHW Program in June of 2021. In her short time with the program, she has helped create new partnerships for the Network and strengthened existing partnerships. We look forward to her continued growth with HRHN.

HRHN's Newest Team Members

Alexa Colon, iMAD Program

Alexa joined the iMAD Program in December. She is serving as a Health Educator. Alexa enjoys cooking and collecting sneakers. Alexa has two children and says she loves spending time with them and friends eating and having good conversation.



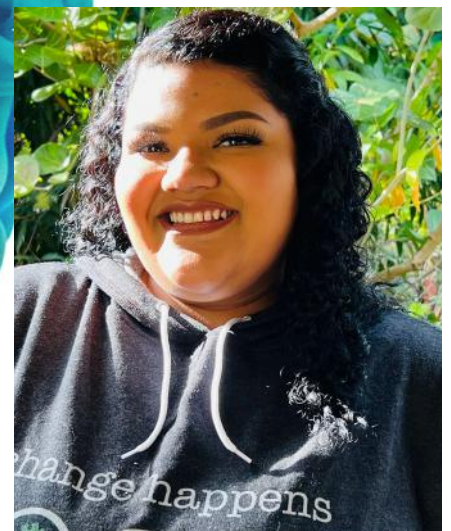
Wendy Neugent-Healy, HD CHW Program

Wendy joined HRHN under the HD CHW Program as a CHW in November and has already started effecting change for her clients! Wendy enjoys singing and volunteers her time as chairman of the dance committee for her community.



Marissa Adame, iMAD Program

Marissa joined the iMAD Program at HRHN as a Health Educator in December. Marissa is currently learning how to play guitar. Her favorite things to do with friends are going out to eat, singing karaoke, and having good conversation. She loves visiting the beach!





The Office of Community Outreach, Engagement, and Equity at Moffitt Cancer Center is conducting an updated Community Health Needs Assessment (CHNA) during 2022 to understand and plan for the current and future health needs of the community.

Part of the CHNA process includes gathering input from a wide variety of community members. To collect input, the hospital is inviting adults residing across a 23-county region to participate in an online community health survey. The information gathered by this survey will be used to improve health resources in the area.

We need your help to distribute the survey links. Please share with your staff, any relevant email lists, include the links in upcoming e-newsletters, or post them to your social media pages. Your assistance is greatly appreciated!

ENGLISH COMMUNITY HEALTH SURVEY

SPANISH COMMUNITY HEALTH SURVEY

Heartland Rural Health Network, Inc. is happy to share with you some great updates from our members and community partners! Thank you for your continued commitment to improving rural health care through your association with Heartland Rural Health Network. A full description of current Network initiatives can be found online on our website.

If the Network can partner with your organization on a project, please contact us to discuss. We value community partnerships to accomplish the mission of the Network.

Please feel free to forward this newsletter to a friend or colleague.



Heartland Rural Health Network, Inc.
www.hrhcn.org

863.471.6007

Mission: Improving access to quality health care by implementing creative solutions in collaboration with network members and community partners.

Vision: To be a leader of innovative, collaborative, and quality driven rural health initiatives.

2021 – 2022 Board of Directors: Vince Sica, President; Blake Warren, Vice President; Heather Stephenson, Secretary/Treasurer; Robert Rihn, Past President; David Robbins, David Duke, Denise Collazo, and Denise Grimsley.

